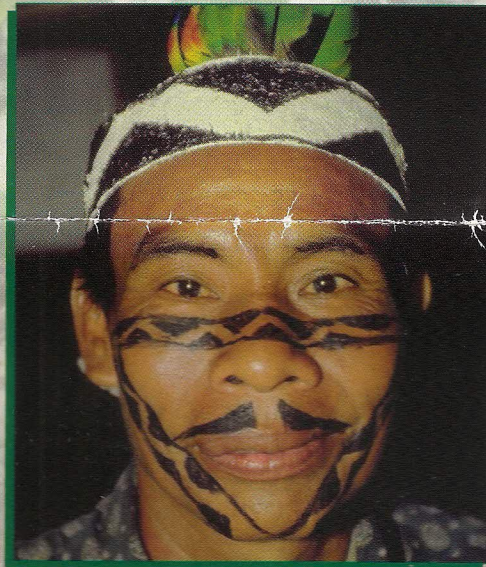


TAKE THE SHAMANIC VOYAGE OF DISCOVERY
UP THE PERUVIAN AMAZON WITH
THE WILD MUSHROOM TRAVELING ROAD SHOW

AMAZON FORAYS



Join us on a Shamanic Voyage of Discovery up the Peruvian Amazon.



GERRY MILLER, artist, mycologist, and maestro of Amazonian healing arts, began his travels in South America over 30 years ago, living with an isolated tribe of Jivaro Indians. There he was initiated into the secrets of the rainforest and its people.

Over 20 years ago my husband Gerry began leading trips in the Peruvian Amazon, visiting remote tribes, collecting and identifying rare and unknown species of fungi and medicinal plants including the previously unknown mushroom *Paxillus Amazonicus*. He also discovered a luminescent species of *Mycena* that glows in the dark and an as yet unnamed variety of Amazonian Shittake pictured here.

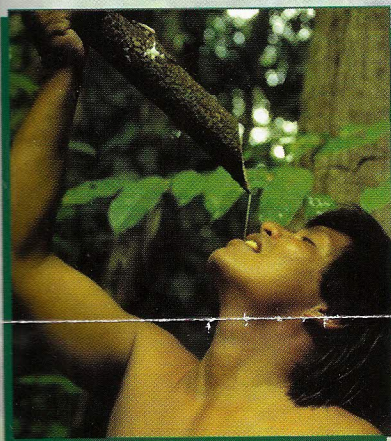


The circumference of the biggest trees of the Amazon like those pictured here can measure hundreds of feet.

In 1984, I joined him and in 1987 we were married on a remote tributary of the Amazon. Since then, we have led many voyages up and down the Peruvian Amazon and its tributaries visiting inaccessible tribes never seen by outsiders, all while living in comfort on our beautiful riverboat. We invite you to join us! The voyage begins at midnight on the day of your arrival in Iquitos Peru. We travel without an itinerary, but with Amazonian Shamans and our handpicked crew of Amazonian Indians, always looking for the unknown, the undiscovered and the unexplored.



A new Shiitake mushroom discovered by Gerry growing off a giant termites' nest high in the rainforest canopy.



LIVE IN COMFORT on our beautiful mahogany riverboat while experiencing the magic and mystery of the Peruvian Amazon untouched by the hand of destruction.

PARTICIPATE IN ALL-NIGHT CEREMONIES guided by Amazonian Shamans deep in the virgin rainforest beneath the sacred medicine trees of the jungle.

THREE ALL-NATURAL GOURMET MEALS are served each day featuring fresh foods of the Amazon, including a selection of wild, edible mushrooms, exotic fish and game, gorgeous salads and endless fresh fruit and juices. Vegetarian diets are easily accom-

FOLLOWING ARE A FEW OF THE MANY WAYS YOUR PARTICIPATION IN THE WILD MUSHROOM TRAVELING ROAD SHOW BENEFITS THE PERUVIAN AMAZON AND ITS PEOPLE...

- The discovery and surveying of known and unknown species of fungi crucial to the maintenance and regrowth of the rainforest. Many mushrooms have a symbiotic relationship with the trees, actually helping them to grow.
- The funding of building and maintenance of Malokas (tribal cultural centers) up and down the many tributaries we travel.
- Purchasing and preservation of the biggest trees, those eagerly sought by the lumber companies.
- Bringing our Shamans to the aid of villagers, medical assistance, paying for operations for tribal people, donation of medicines and surgical equipment to jungle clinics.

modated. An excellent selection of Peruvian beers and wines are offered. Juices, fruits, sodas, bottled water, Peruvian coffee and herbal teas are available 24 hours a day. Special dietary needs are joyfully satisfied by our two talented chefs. In addition, there is Gerry's famous medicinal bar of over fifty jungle cures for everything from cancer to impotence, arthritis, leukemia, diabetes, tumors, gangrene, burns, bites, menstrual problems, immune system deficiencies, back problems and more.

WE HAVE FOUR MOTORIZED CANOES for special expeditions day and night, as well as a dugout or two. The riverboat is equipped with a giant ladder for swimming in rivers, lakes and streams. We visit tribal lands and people sharing their jungle trails, secret lakes, village life and culture. We participate in tribal festivities and have the opportunity to trade with native people. We visit several different tribal groups, each with its own distinctive language, culture and land.

THE PRICE INCLUDES EVERYTHING from Miami for two magical weeks: tips, taxes, transportation, food, drink, lodging and laundry; plus the services of our Amazonian



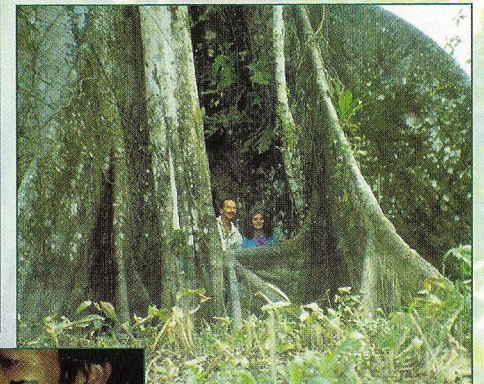
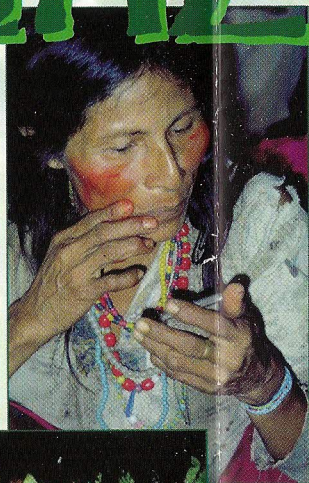
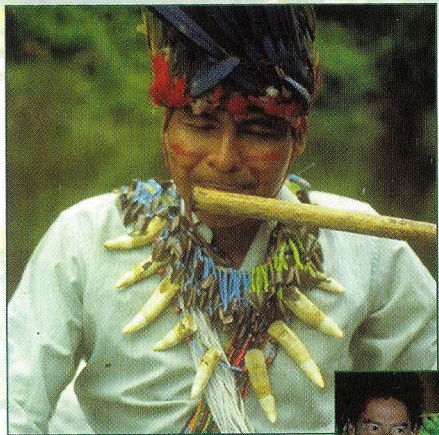
Shamans, native crew and guides. Our laundry ladies are beautiful twins from the Shipibo tribe, expert in traditional crafts, speaking their native tongue and wearing traditional dress.

THE OPEN ROOF OF THE TRIPLE-DECKER RIVERBOAT has hammocks under a canopy and lots of open space for dancing, drumming, stargazing and gathering. The boat has eight double cabins, four full bathrooms, a mahogany-paneled dining room with a fridge and open bar. There is lots of open space all around the riverboat with vistas ever changing. Additional indoor space is available for studio and laboratory work.

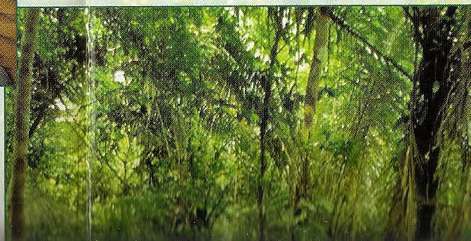
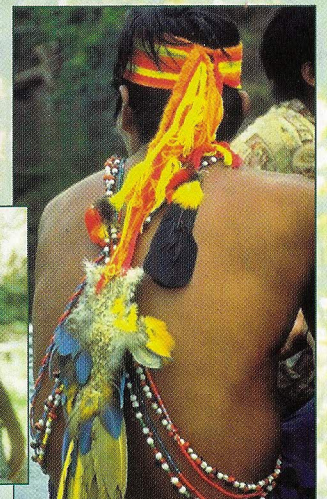
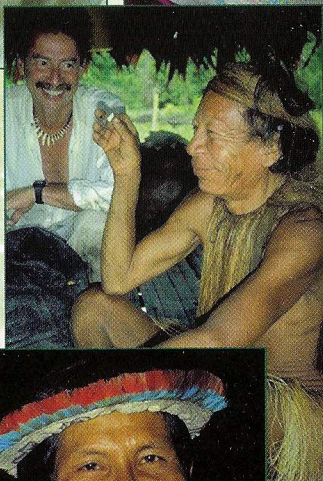
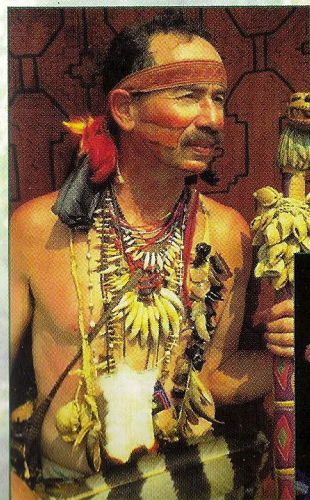
- Legal and financial assistance to tribal leaders.
- Encouragement of traditional tribal beliefs and practices.
- Purchasing of large tracts of rainforest lands for preservation.
- Transportation of native people and their produce.
- Gifts of items such as salt, seeds, steel agricultural implements, cash, medicines, mosquito nets, sheets, fuel, etc. to remote tribal groups who have no access to such things.
- But most importantly, we bring our intense interest in their cultural traditions and ancient knowledge, seeking out tribal elders, showing them the respect and honor they deserve, stimulating the interest of the youth in their ancient tribal knowledge and ways, encouraging the harvesting and production of native medicinal plants.

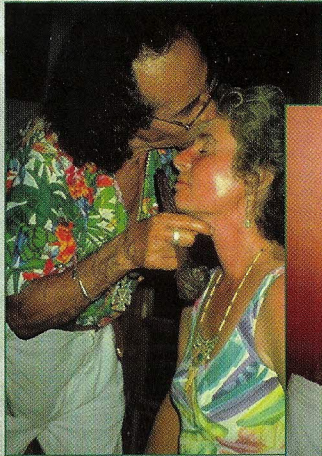
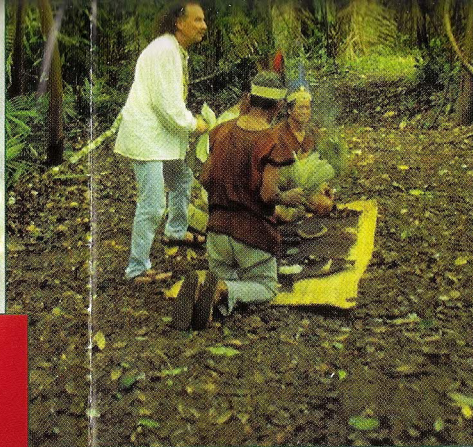
THE WILD MUSHROOM TRAVELING ROAD SHOW

AMAZON FORAYS



*Gerry and Chris enclosed by
Lupuna tree.*





These two photos were taken during a Shamanic healing for Chris.

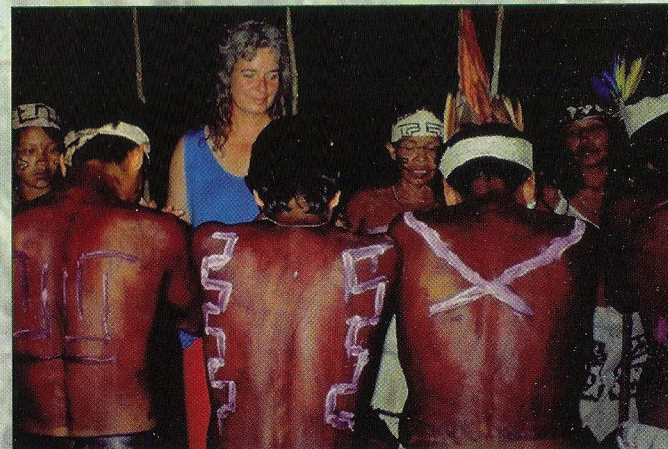
These two photos were shot in rapid succession. The first shows Gerry and the Shamans chanting to the spirit of the Renaco tree that shelters the site where the mesa is being prepared for a ceremony. In the second picture, the spirit of the Renaco responds! Notice Gerry in white in exactly the same position with the seated Shamans being showered with white light. This is one of the many spirit pictures we have taken during Shamanic ceremonies on our trips. These photos have been analyzed by professional photographers. Light leaks have been ruled out. As always when we find ourselves in the presence of a powerful medicine tree, the Shamans chant to its spirit. Often, the image of the spirit is captured on film as it is here.



A photo of the spirit of the giant Lupuna tree invoked by a Jivaro chief (shown in both photos).

DURING THE VOYAGE, extensive discussions are held where dreams and visions are interpreted by the Shamans who are available 24 hours a day for personal healing, massage and spiritual work. They guide us on jungle walks where we learn about medicinal plants and hear the sacred songs specific to each tree's healing spirit. The Shamans point the way to a more meaningful future—a fuller life in which your potential can be realized.

Three all-night ceremonies are conducted each week. Each ceremony takes place in a different setting. The perfect spot is located



by the Shamans going out on expedition the afternoon of the night of the ceremony. You and the others can accompany and assist the Shamans in finding and preparing the sacred site wherever a group of giant medicine trees grows, the abode of the most powerful and beneficial spirits of the jungle. The Shamans chant throughout the ceremony, moving around the circle of

participants, giving spiritual guidance and physical healing where needed, all against a background of the magical, musical night sounds of the jungle.

CHRIS & GERRY MILLER

P.O. Box 126 • East Haddam, CT 06423

860-873-8286